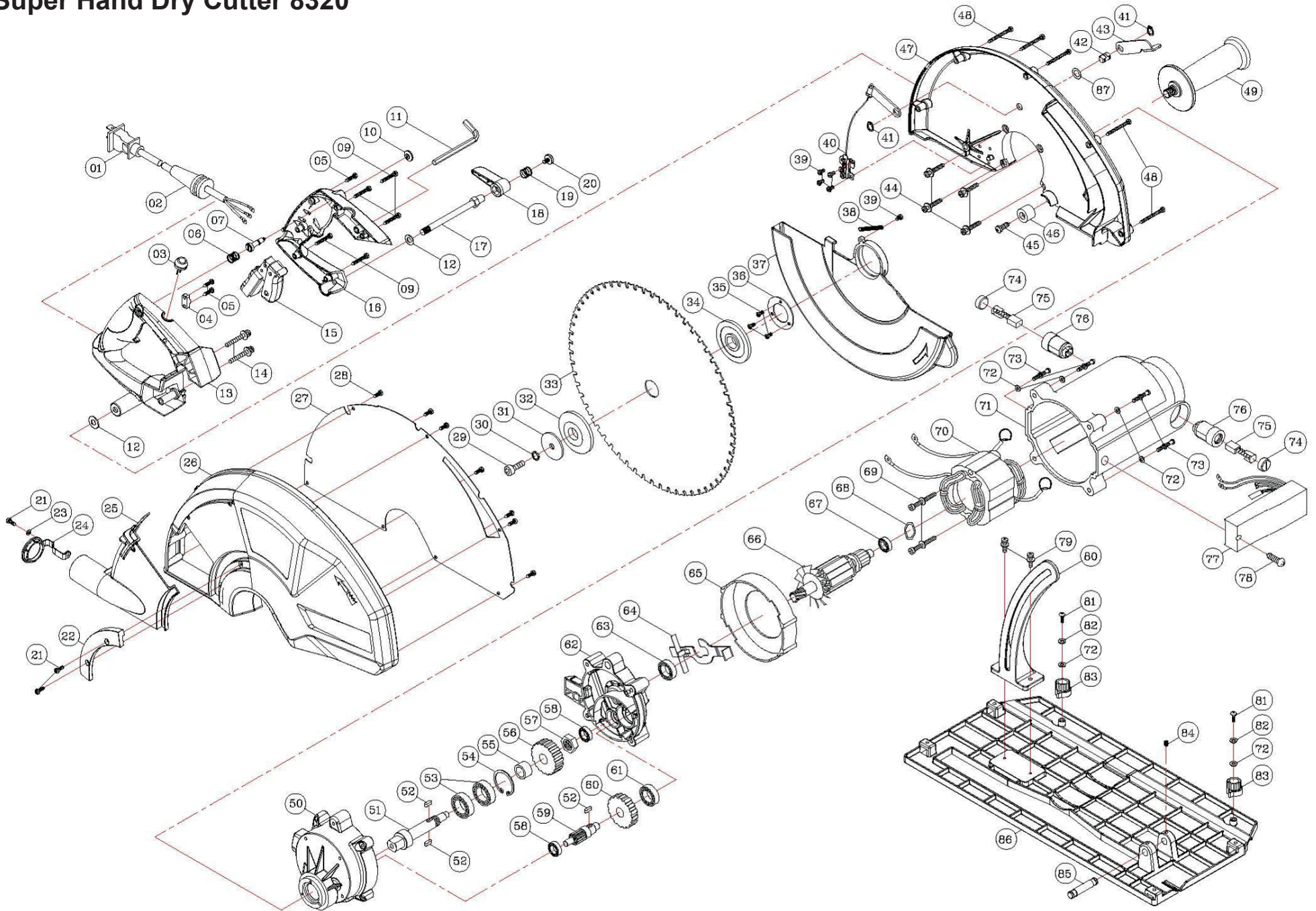


Super Hand Dry Cutter 8320



ITEM	PART NO	Q'TY	PART NAME	
1.)	JEP32001	1	POWER SUPPLY CORD	220 V 1.5 x 2C x 5M
	JEP32001US	1	POWER SUPPLY CORD	110 V US Plug
2.)	JEP23060	1	CORD ARMOR	
3.)	JEP32003	1	LED INDICATOR LIGHT	220 V
4.)	JEP32004	1	CORD CLIP	
5.)	JEP32005	3	SCREW	M4 x 14
6.)	JEP32006	1	SPRING	
7.)	JEP32007	1	LOCK RELEASE PLUNGER	
9.)	JEP32009	5	PAN HEAD SCREW	M4 x 25
10.)	JEP32010	1	LOCK RELEASE BUTTON	
11.)	JEP32011	1	L-HEX KEY	M6
12.)	JEP32012	2	FLAT WASHER	Ø8 x Ø20 x 1
13.)	JEP32013	1	HANDLE HALF RIGHT	PA66 127.5g
14.)	JEP32014	2	SCREW	M5 x 40
15.)	JEP32015	1	SWITCH	
16.)	JEP32016	1	HANDLE HALF LEFT	PA66 71g
17.)	JEP32017	1	DEPTH LOCK SHAFT	
18.)	JEP32018	1	DEPTH LOCK LEVER	
19.)	JEP32019	1	SPRING	Ø0.7 x Ø10.5 x Ø11.9
20.)	JEP32020	1	TORX HEAD SCREW	M5 x 8
21.)	JEP32021	3	PAN HEAD SCREW	M4 x 10
22.)	JEP32022	1	COVER TRACK	PA66 15g
23.)	JEP32023	1	FLAT WASHER	Ø4 x Ø10 x 1
24.)	JEP32024	1	DUST PORT PLUG	EP 5.5g
25.)	JEP32025	1	DUST CHAMBER COVER	PA66 70.6g
26.)	JEP32026	1	OUTER BLADE COVER	PA66 394g
27.)	JEP32027	1	INNER PLATE	480.3g
28.)	JEP32028	7	PAN HEAD SCREW	M4 x 6
29-34)	JEP32034SET	1	FLANGE SET: 1xSOCKET CAP BOLT, 1x SPRING	
35.)	JEP32035	3	FLAT HEAD SCREW	M4 x 6
36.)	JEP32036	1	BEARING COVER PLATE	
37.)	JEP32037	1	LOWER BLADE GUARD	374g
38.)	JEP32038	1	SPRING	
39.)	JEP32039	5	PAN HEAD SCREW	M4 x 6
40.)	JEP32040	1	KICKER MECHANISM	
41.)	JEP32041	2	EXTERNAL CIRCLIP	S-10
42.)	JEP32042	1	PIVOT PIN	
43.)	JEP32043	1	KICKER LEVER	
44.)	JEP32044	4	SCREW	M5 x 25
45.)	JEP32045	1	SCREW	M6 x 12
46.)	JEP32046	1	BUMP STOP	
47.)	JEP32047	1	UPPER BLADE COVER	590g
48.)	JEP23056	5	PAN HEAD SCREW	M4 x 25
49.)	JEP23042	1	SIDE HANDLE	
50.)	JEP32050	1	GEAR CASE	460g
51.)	JEP32051	1	SPINDLE	
52.)	DP037	3	PARALLEL KEY	5 x 5 x 10
53.)	JEP32053	2	BALL BEARING	6202-2NSE NACHI
54.)	MA3518	1	INTERNAL CIRCLIP	R-35
55.)	JEP32055	1	SPACER	
56.)	JEP32056	1	OUTPUT GEAR	S45C T36
57.)	JEP32057	1	NUT	M14 x P2.0 x 7
58.)	JEP23014	2	BALL BEARING	608 zz NMB
59.)	JEP32059	1	INTERMEDIATE PINION	SCM415 T11
60.)	JEP32060	1	INPUT GEAR	SCM415 T34
61.)	JEP23044	1	BALL BEARING	6200 zz TPI
62.)	JEP32062	1	GEAR PLATE	292g
63.)	JEP32063	1	BALL BEARING	6002-LLU TPI
64.)	JEP32064	1	SPINDLE LOCK UNIT	
65.)	JEP23041	1	FAN SHROUD	
66.)	JEP32066UK	1	ARMATURE	110V
	JEP32066	1	ARMATURE	220V
67.)	JEP23044	1	BALL BEARING	6200-LLU TPI
68.)	JEP32068	1	WAVE WASHER	Ø29.5
69.)	JEP32069	2	SCREW W/ WASHER	M5 x 60

70.)	JEP32070UK	1	STATOR	110V
	JEP32070	1	STATOR	220V
71.)	JEP32071	1	MOTOR HOUSING	
72.)	JEP23048	6	FLAT WASHER	Ø5 x Ø12 x 1
73.)	JEP32073	4	SCREW W/ WASHER	M5 x 60
74.)	JEP23052	2	BRUSH CAP	7 x 17
75.)	JEP23051	1	CARBON BRUSH SET (2 Pieces)	7 x 17 x 17
76.)	JEP23050	2	BRUSH HOLDER	7 x 17
77.)	JEP32077UK	1	ELECTRONICS UNIT	110V
	JEP32077	1	ELECTRONICS UNIT	220V
78.)	JEP32078	1	SCREW	M5 x 20
79.)	JEP32079	2	PAN HEAD SCREW	M5 x 16
80.)	JEP32080	1	PIVOT BRACKET	140g
81.)	JEP32081	2	TRUSS HEAD SCREW	M5 x 8
82.)	JEP32082	2	SPRING WASHER	φ5 x φ12 x 0.5
83.)	JEP32083	2	GUIDE CLEARANCE ADJUSTOR	
84.)	JEP32084	1	SOCKET SET SCREW	M5 x 8
85.)	JEP32085	1	PIVOT PIN	Ø10 x 54
86.)	JEP32086	1	BASE	717g
87.)	JEP32087	1	RUBBER WASHER	Ø10 x Ø18 x 1.1

SETS

88.)	JEP32025SET	1	PAN HEAD SCREW (21) / FLAT WASHER (23) / DUST PORT PLUG (24) / DUST CHAMBER COVER (25)
89.)	JEP32013SET	1	HANDLE HALF LEFT (16) / HANDLE HALF RIGHT (13)
90.)	JEP32017SET	1	2x FLAT WASHER (12) / DEPTH LOCK SHAFT (17) / DEPTH LOCK LEVER (18) / SPRING (19) / TORX HEAD SCREW (20)
91.)	JEP32040SET	1	4x PAN HEAD SCREW (39) / KICKER MECHANISM (40) / EXTERNAL CIRCLIP (41) / PIVOT PIN (42) / KICKER LEVER (43) / RUBBER WASHER (87)
92.)	JEP32036SET	1	3x FLAT HEAD SCREW (35) / BEARING COVER PLATE (36)
93.)	JEP23050SET	1	2x BRUSH HOLDER (76) / 2x BRUSH CAP (74)
94.)	JEP32083SET	1	2x TRUSS HEAD SCREW (81) / 2x SPRING WASHER (82) / 2x FLAT WASHER (72) / 2x GUIDE CLEARANCE ADJUSTOR (83)
95.)	JEP32038SET	1	SPRING (38) / PAN HEAD SCREW (39)